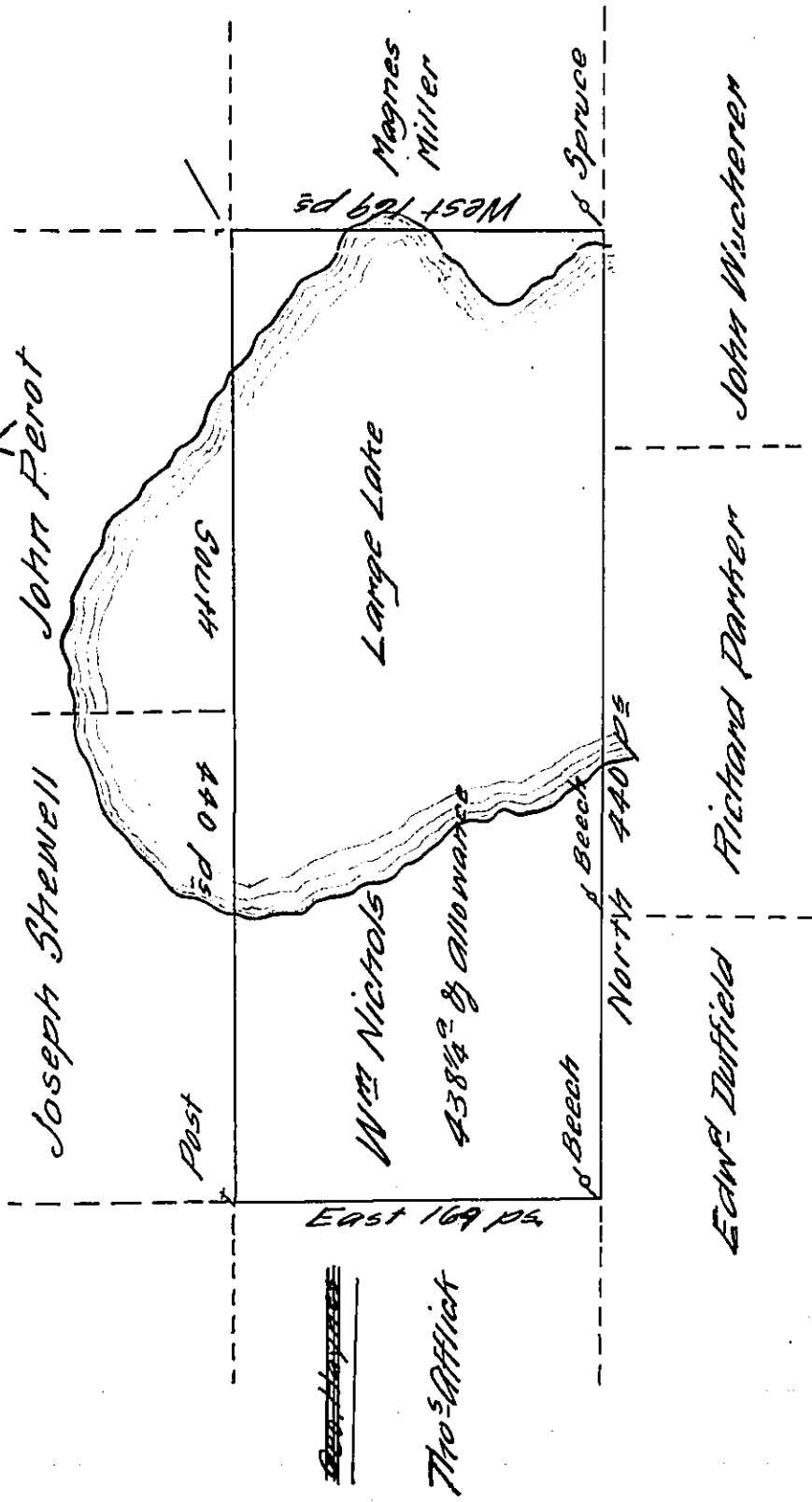


A-22-164



A draught of a tract of land called _____ Situate about
 ten Miles ^{Westward} from where the Line between Pennsylvania & New
 York Crosses the N.E. Branch of Susquehanna Next above
 the Chimang Branch and about Two Miles and an half
 Southward from said Line, including part of Large Lake
 at the ^{head of} Chocnut Creek in Stoke Township North^d County
 Containing four Hundred & thirty Eight acres ^{1/4} & Allowance of
 Six p Cent for Roads &c. SURV^d for W^m Nichols the 6th Day of
 September 1784 - in Pursuance of a Warrant Dated the 24th Day
 of August 1784.

To JOHN LUKENS ESQ^r } BY W^m GRAY D.S.
 SURV^r Gen^l }

IN TESTIMONY that the above is a copy of the original remaining on file in
 the Department of Internal Affairs of Pennsylvania, made
 conformably to an Act of Assembly approved the 16th day of
 February, 1833, I have hereunto set my Hand and caused
 the Seal of said Department to be affixed at Harrisburg,
 this ninth day of JUNE 19 11.

Henry Howell
 Secretary of Internal Affairs.